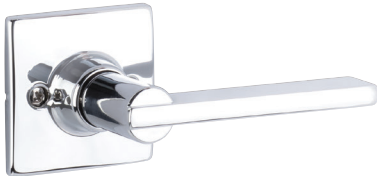




# EXPRESSIONS™ SERIES

Style  
Lever  
Finishes

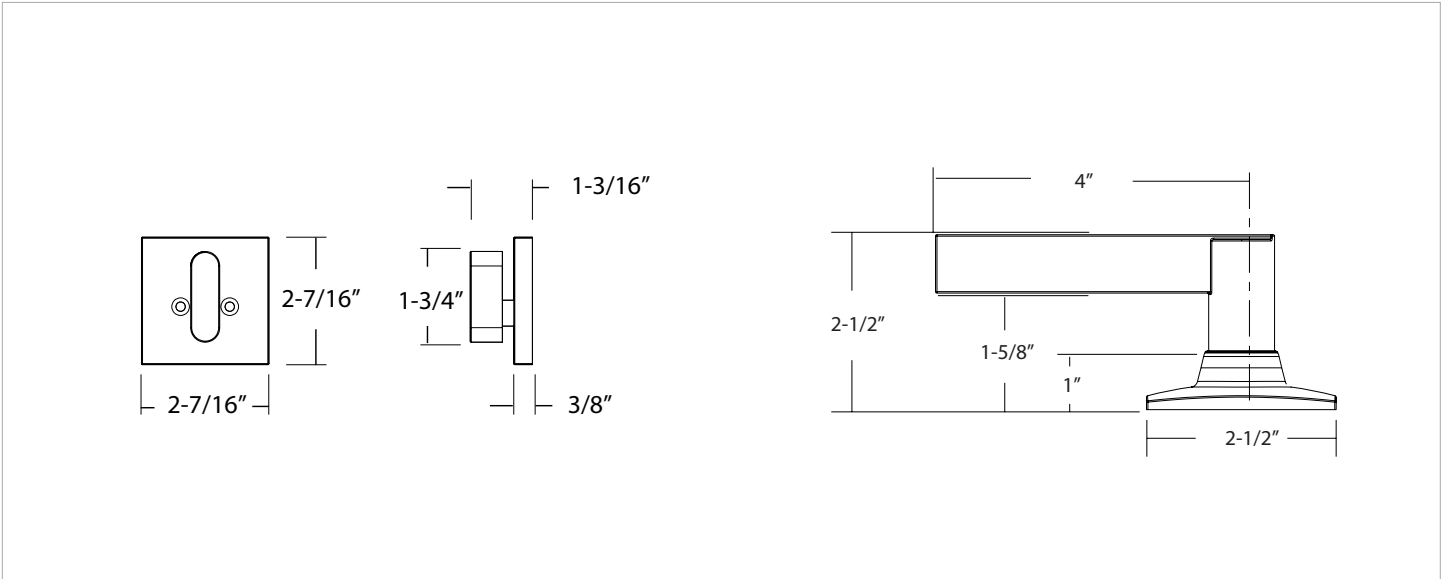
**Marcel**  
Nils  
Satin Brass (US4)  
Satin Nickel (US15)  
Flat Black (US19)  
Polished Chrome (US26)



Door Specs 2-1/8" Face Bore, 1" Edge Bore  
5-1/2" Center to Center Door Prep  
1" x 2-1/4" Radius Corner

Door Thickness 1-3/8" to 1-3/4"

Handing Universal handing



**Description**  
Marcel Trim with Nils Lever

**Function**  
Single Cylinder

**Satin Brass**  
YMRC43.NILUS4

**Satin Nickel**  
YMRC43.NILUS15

**Flat Black**  
YMRC43.NILUS19

**Polished Chrome**  
YMRC43.NILUS26